

Drawing



Hendi B.V.
Steenoven 21
3911 TX Rhenen
The Netherlands

Batch #

000000 until 701759

Appliance part#

239711

Description

Induction cooker 3500W

Date

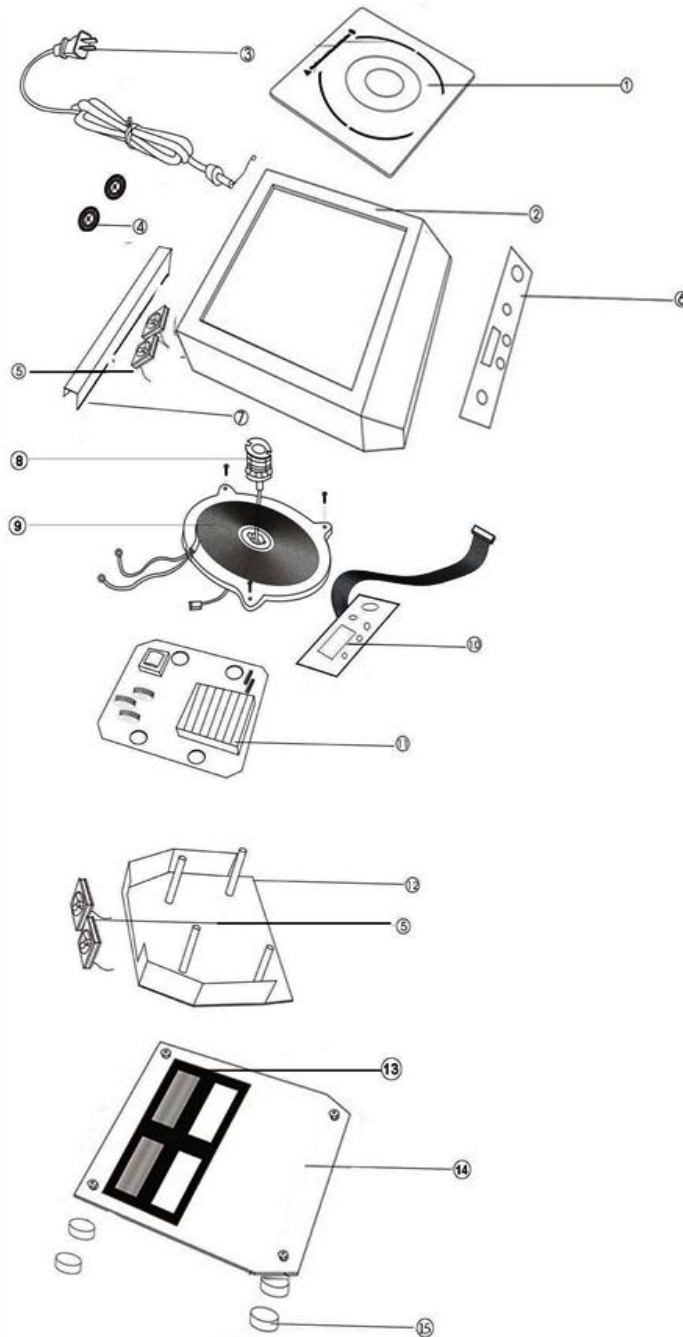
30-10-2012

Revision #


Revision version

Revision

First bill of materials (BOM)



Bill of materials (BOM)

 Hendi B.V. Steenoven 21 3911 TX Rhenen The Netherlands	Batch #	Appliance part#
	000000 until 701759	239711
	Description	
Induction cooker 3500W		


Date	30-10-2012	Revision #	Revision version
Revision	First bill of materials (BOM)		

Item	Description	Part#	Quantity	Remark	Picture
1	Glass plate	nss	1	Available as 901342	
2	Upper housing	901342	1	Incl item 1	
3	Power cord	929353	1		
4	Cover fan	n/a	2		
5	Fan 18V	901441	4		
6	Display sticker	901397	1		
7	Bracket	n/a	1		
8	Sensor	929742	1		
9	Main coil	901380	1		
10	Control pcb	n/a	1	Production ceased	
11	Main pcb	n/a	1	Production ceased	
12	Plastic bracket	n/a	1		
13	Filter	929759	1		
14	Bottom cover	n/a	1		
15	Feet	901373	4		

n/a -> not available

nss -> not sold separately

Wiring diagram

 <p>Hendi B.V. Steenoven 21 3911 TX Rhenen The Netherlands</p>	Batch #	Appliance part#
	000000 until 701759	239711
	Description	
	Induction cooker 3500W	

Date	30-10-2012	Revision #	Revision version
Revision	First bill of materials (BOM)		

